

Official General Election Ballot

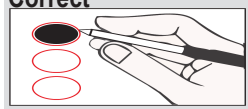
Prowers County, Colorado
Tuesday, November 06, 2018

Jana Coen

Clerk and Recorder

Precinct: Propertyowners
Ballot Style: PCHD

How to vote



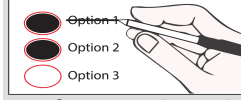
- Correct**
- Use blue or black ink
 - Completely fill the oval to the left of your choice

Incorrect



- Do not vote for more candidates or choices than indicated for each ballot contest
- Do not sign or initial your ballot or mistakes

If you make a mistake



- Cross out the entire name or choice that you marked by mistake
- Completely fill another oval to the left of the correct choice

- Do not erase or white out mistakes
- You don't have to vote in every race or contest

Optional write-in



- Completely fill the oval to the left of the words "Write-in"
- Then legibly print the name of an eligible write-in candidate on the line

WARNING: Any person who, by use of force or other means, unduly influences an eligible elector to vote in any particular manner or to refrain from voting, or who falsely makes, alters, forges, or counterfeits any mail ballot before or after it has been cast, or who destroys, defaces, mutilates, or tampers with a ballot is subject, upon conviction, to imprisonment, or to a fine, or both. Section 1-7-5-107(3)(b), C.R.S.

District Measures

Prowers County Hospital District Ballot Question 7A

Shall the term limits imposed by article XVIII, section 11 of the Colorado constitution be eliminated for Prowers County Hospital District directors?

- Yes/For No/Against